



# Z706-HDS

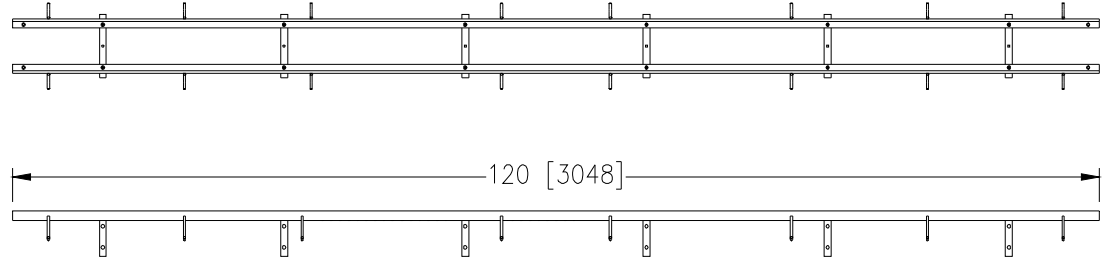
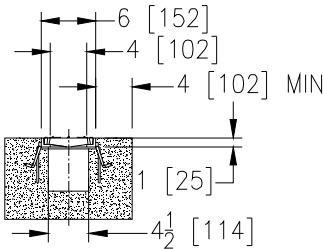
## 6 [159] WIDE REVEAL FRAME AND GRATE SYSTEM WITH TYPE 304 STAINLESS STEEL FRAME

SPECIFICATION SHEET

TAG \_\_\_\_\_

Dimensional Data (inches and [ mm ]) are Subject to Manufacturing Tolerances and Change Without Notice

SPECIFYING ENGINEER IS RESPONSIBLE FOR CONCRETE ENCASUREMENT AND REINFORCING BASED UPON APPLICATION AND LOCAL CODES



### ENGINEERING SPECIFICATION: Zurn Z706-HDS

Frame and Grate System shall be 120 [3048] long, 6 [152] wide and have a 4 [102] clear opening. Frame shall mechanically lock into the concrete surround every 10 [254]. Shall be provided with standard SBG grates that lock down to frame. Zurn 6 [152] wide reveal Stainless Steel cast Bar Grate conforming to ASTM specification A351, Grade CF8 (type 304), cast grate is rated class E per the DIN EN1433 top load classification. Supplied in 20 [508] nominal lengths with 5/16 [8] wide slots, and 3/4 [19] bearing depth. Grate has an open area of 23.93 sq. in per ft. [50,651 sq. mm per meter]. The 0.105 [2.66] thick Heavy-Duty Stainless Steel Frame Assembly conforms to ASTM specification A-240 (type 304), with 12 - 4 [102] long concrete anchors per 120 [3048]. Grate lockdown bars are to be integral to the frame. All welds must be performed by a certified welder per ASTM standard AWS D1.6. Frames Shall be produced in the U.S.A.

### PREFIX OPTIONS (Check/specify appropriate options)

Z Ten-foot, Type 304 Stainless Steel Frame with Anchor Studs\*

### SUFFIX OPTIONS (Check/specify appropriate options)

#### Grate Options (Load Classifications are per DIN EN1433)

- BDC Black Acid Resistant Epoxy Coated Ductile Grate - Class C
- BDE Black Acid Resistant Epoxy Coated Ductile Grate - Class E
- DC Ductile Iron Solid Cover - Class C
- DGC Ductile Iron Slotted Grate - Class C
- HPD Heel-Proof Ductile Slotted Grate - Class B
- HPDE Heel-Proof Ductile Slotted Grate - Class E
- HPP Heel-Proof Polyethylene Grate - Class A
- SBG Cast Stainless Steel Bar Grate - Class E \*
- RFSC Reinforced Slotted Stainless Steel Grate - Class C
- RPSC Reinforced Perforated Stainless Steel Grate - Class C
- RPSRC Reinforced Perforated Stainless Steel Reversed Punch Grate - Class C

#### Miscellaneous Options

- VP Vandal-Proof Lockdown
- RC Rebar Clip

#### Decorative Grate Options (Load Classifications are per DIN EN1433)

- BCD Bronze Circular Decorative Grate - Class A
- BDD Bronze Diagonal Decorative Grate - Class A
- DCD Ductile Iron Circular Decorative Grate - Class C
- DDD Ductile Iron Diagonal Decorative Grate - Class A
- DOG Ductile Iron Decorative Grate - Class A
- DWV Ductile Wave Decorative Grate - Class A
- HPB Heel-Proof Bronze Slotted Grate - Class A
- HPS Heel-Proof Stainless Steel Slotted Grate - Class A
- SCD Stainless Steel Circular Decorative Grate - Class B
- SDD Stainless Steel Diagonal Decorative Grate - Class B
- SOG Stainless Steel Decorative Grate - Class B

#### MADE in the U.S.A. (Load Classifications are per DIN EN1433)

- BDE-USA Black Acid Resistant Epoxy Coated Ductile Grate - Class E
- DGC-USA Ductile Iron Slotted Grate - Class C
- DGE-USA Ductile Iron Slotted Grate - Class E
- FS Fabricated Stainless Steel Slotted Grate - Class A
- GG Fiberglass Grate - Class A
- HPDE-USA Heel-Proof Ductile Slotted Grate - Class E
- PPC Plastic Perforated Grate - Class A
- PS Perforated Stainless Steel Grate - Class A

#### Decorative MADE in the U.S.A. (Load Classifications are per DIN EN1433)

- BZ Bronze Decorative Grate - Class A
- NBZ Nickel Bronze Decorative Grate - Class A
- PSR Perforated Stainless Steel Raised Grate - Class A
- SWG Stainless Steel Wire Grate - Class A

Supplied By:



877-903-7246

www.trenchdrainsupply.com

\* Regularly furnished unless otherwise specified.

#### Zurn Industries, LLC | Specification Drainage Operation

1801 Pittsburgh Avenue, Erie, PA U.S.A. 16502 · Ph. 855-663-9876, Fax 814-454-7929

#### In Canada | Zurn Industries Limited

3544 Nashua Drive, Mississauga, Ontario L4V 1L2 · Ph. 905-405-8272, Fax 905-405-1292

www.zurn.com

Rev. E

Date: 07/23/14

C.N. No. 131263

Prod. | Dwg. No. Z706-HDS